



MONTHLY MEMBERSHIP PROGRESS REPORT

District 323E2

Results as of: 10/31/2015

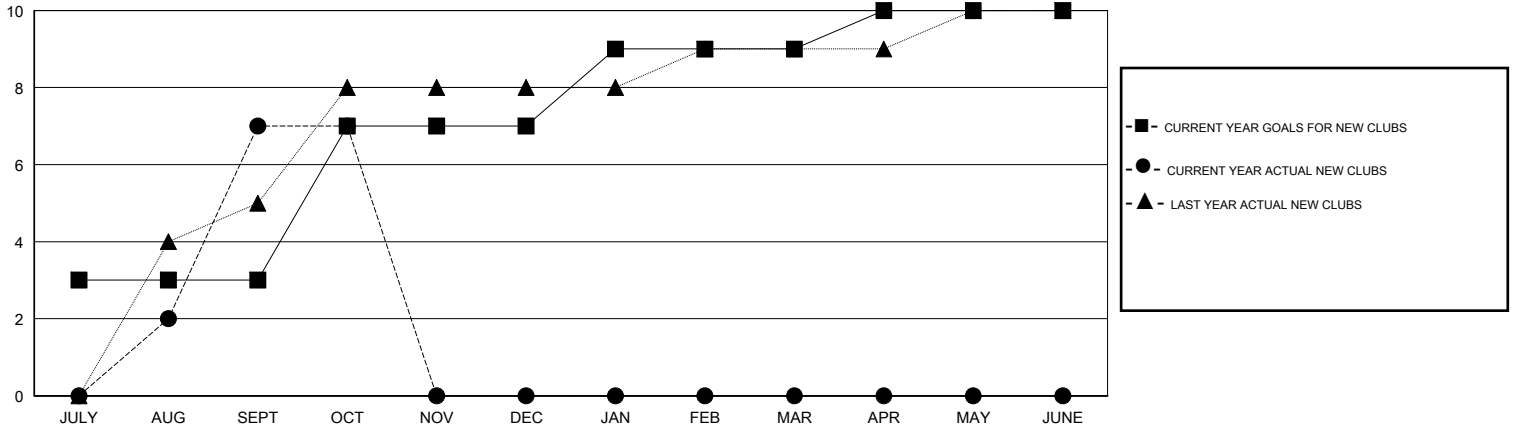
GMT: KAMLESH JAIN

LOCATION INDIA

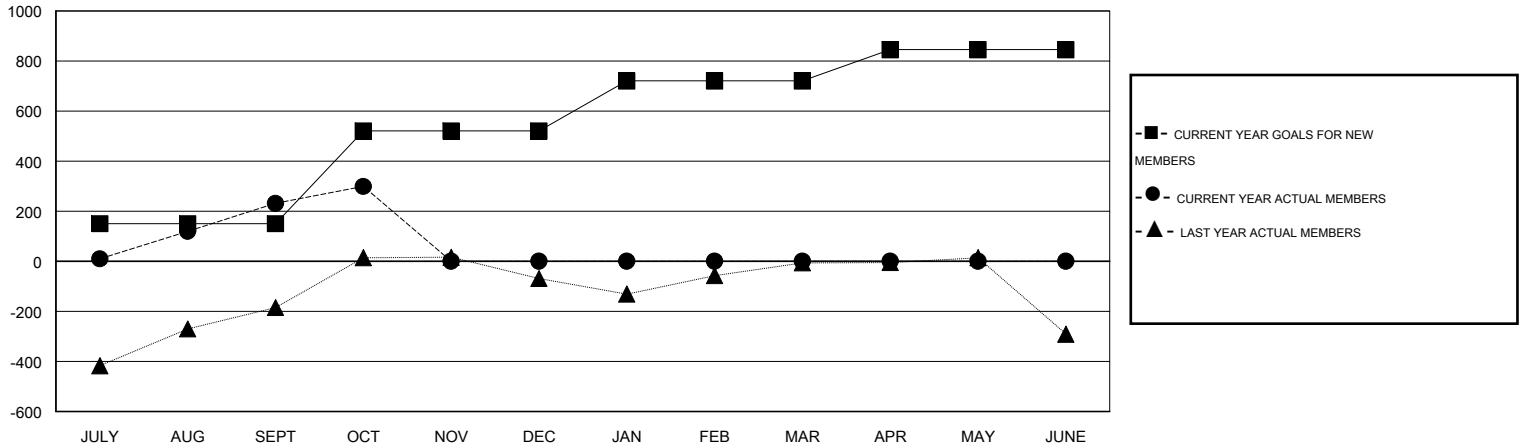
GMT CA 6

Clubs					Members				
RESULTS FOR 2015-2016					RESULTS FOR 2015-2016				
QUARTER	NEW CLUB GOAL	NEW CLUBS	DROPPED CLUBS	NET GAIN/LOSS	QUARTER	NEW MEMBER GOAL	CHARTER AND NEW MEMBERS ADDED	DROPPED MEMBERS	NET GAIN/LOSS
JULY/AUG/SEPT	3	7	1	6	JULY/AUG/SEPT	150	399	168	231
OCT/NOV/DEC	4	0	0	0	OCT/NOV/DEC	370	97	29	68
JAN/FEB/MAR	2	0	0	0	JAN/FEB/MAR	200	0	0	0
APR/MAY/JUNE	1	0	0	0	APR/MAY/JUNE	125	0	0	0

GOALS AND ACTUAL NEW CLUBS CUMULATIVE



GOALS AND ACTUAL MEMBERS CUMULATIVE



DROPPED CLUBS: 1	67 CLUBS OF 138 ADDED 1 OR MORE NEW MEMBERS	<u>GENDER DISTRIBUTION</u>	
		MALE	4,722 (83.55%)
<u>DROPPED MEMBERS</u>		FEMALE	930 (16.45%)
DECEASED	5	CLICK HERE FOR HEALTH ASSESSMENT DATA	
CLUB CANCELLED	0		
OTHER	192		
TOTAL	197	FAMILY UNIT MEMBERS	1,486
		HEAD OF HOUSEHOLD	698
		NON-HEAD OF HOUSEHOLD	788